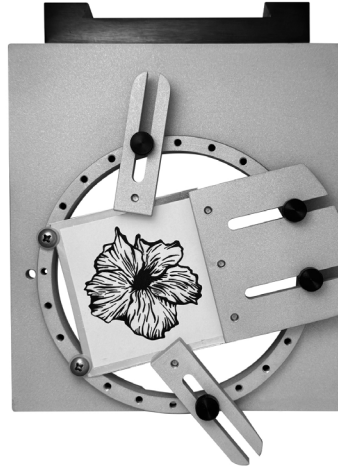


Jayne's Slider Clamps for the Jayne Redman® Rotational WorkRing System

Watch the video on www.jayneredmanjewelry.com or Jayne Redman Jewelry on YouTube.



Large and Small Slider Clamps



Front view of Jayne's Slider Clamps holding a sheet of silver within the WorkRing.



Back view showing screw heads clamped to the silver.

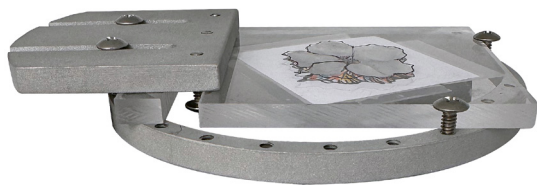
Jayne's Slider Clamps allow any size, shape, or thickness of material to be held securely within the 4.5" WorkRing of the Jayne Redman® Rotational WorkRing System, or the 2.5" Large Ring Circle Clamp, of the Swanstrom SawPlate System. The Swanstrom SawPlate System is available exclusively through Rio Grande. Plastic and stainless-steel thumb screws or Phillips head screws tightly hold the material under the edges of the screw heads on one end, while slots allow the clamp to slide freely between screws attached to the edge of the Ring, adjusting the holding position within the ring.

Screws provided are 1/4", 1/2", 5/8" and 7/8".

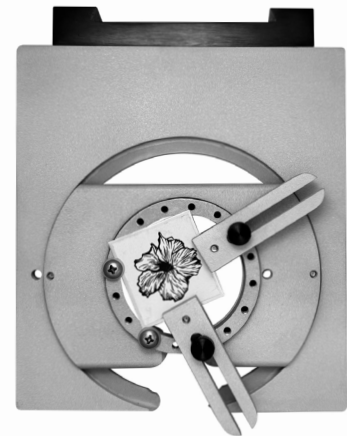
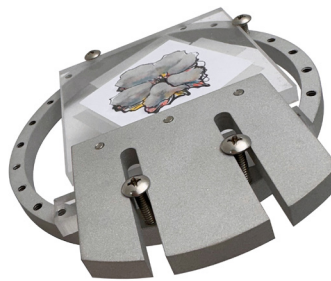
Use 1/4" to clamp and 1/2" to slide for thin material.

Use 1/2" to clamp and 5/8" to slide for 1/4" material.

Use 5/8" to clamp and 7/8" to slide for 1/2" material.



Jayne's Slider Clamps holding a sheet of 1/4" cast acrylic for carving a non-conforming die. Place a piece of material of the same thickness under the sliding end of the clamp for support.



The Swanstrom Circle Clamp Adaptor holds a Swanstrom Large Circle Clamp. A sheet of 26 gauge silver is held within it with Small Slider Clamps.